



ALHAMBRA

MEDITERRANEAN SOUL



| SAHEL

| AIRE

| MONDO

| NICOS

ALHAMBRA

Alhambra begins a new journey. Its destination looks south to the Mediterranean and goes across Africa from east to west. The collection takes the name Sahel and rediscovers the ancient trade routes with the African continent by introducing us to the techniques of Bogolan fabric print.

This collection introduces two new essential linen fabrics: Nicos and Mondo. The first, showing lightness; the second, sturdiness. A wide colour range, delicately chosen, offers two effective tools for dressing any space.

Finally, Alhambra, delving into its wide range of voiles, proposes Aire: a collection that takes its name from the winds that traverse the Mediterranean Sea, nine fabrics that help you control and filter light. The intensity, freshness or changes they cause find correspondence in the wefts that form them.

We invite you to discover our collections, based on the most elaborate simplicity and sustainability, always looking back to our origin.



	PAG
SAHEL COLLECTION	8
BAMBARA	12
BOGO	16
JALA	20
MERE	23
SAJENI	26
SAKOLO	30
AIRE COLLECTION.....	36
BORA	38
BRUMA	43
GARBI	47
GREGAL	50
JALOQUE	54
MELTEMI	59
MISTRAL	60
PONIENTE	67
SURADA	72
MONDO COLLECTION	78
NICOS COLLECTION.....	88
FABRIC GALLERY	
SAHEL	108
AIRE	112
MONDO	120
NICOS	120
IMAGE GALLERY	
AIRE	110
MONDO	122
NICOS	124
SAMPLES	
SAHEL & AIRE	114
MONDO & NICOS ...	126
CONTACT INFORMATION.....	128

INDEX |



| SAHEL

THE ANCIENT WISDOM OF A TERRITORY

Sahel, a belt of land crossing the African continent from the Atlantic ocean to the Red Sea, was where the trade routes connecting the west coast of Africa and the Mediterranean began, giving rise to thriving cities like Timbuktu, Gao or Djenne. In addition, it's been the inspiration to name and bring to life our new Sahel collection.

The Sahel is part of our culture because its nomadic tribes traded fabrics and pottery for centuries with the most important ports on the mediterranean coast.

From this territory come Bogolan prints. This African word means 'made of clay' in Bambara. Bogolan originates, according to legend, in the muddy clothes of a hunter and in the sharpness of his wife, who replicated these mud patterns and turned them into art and language. This ancient clay-dyeing technique has been passed down from generation to generation for centuries. Its archetypal patterns full of symbolism are part of our ancestral memory.

Alhambra found inspiration for its new Sahel collection in some of the traces that make up the language of african fabrics. The Sahel collection is made of 100% cotton.

Its fabric substrate is a textured jacquard, digitally printed with reactive dyes and using new sophisticated printing systems that provide high-quality motifs and colours, as well as significant savings in chemicals and energy, aligning Alhambra products with the worldwide trend of production optimisation and environment preservation.

The speed of these digital printing systems also helps us offer a better and faster customer service. The width of the fabrics is 300 cm, which facilitates its use for curtains, bedding, headboards and all kinds of decoration in general.



Armchair MERE 07 - Canvas SURADA 16, JALOQUE 06 - Cushions MONDO 06, NICOS 17



Head BAMBARA 16 - Sheer PONIENTE 00 - Bedcover NICOS 46 - Cushions NICOS 46, MONDO 06, BAMBARA 16



| BAMBARA

FROM POTTERY TO THE CLOTH

Bambara women are the main pottery artisans in Kalabougou, a village on the banks of the river Niger. Clay pots of all imaginable sizes and shapes cross the waters of the Niger every week to the Segou market. Their incisions and the colour of the clay inspire the medallions of our Bambara fabric, with a motif intentionally blurred on the cotton and manufactured in double width to multiply the possibilities of its decorative use.



100% COTTON | WIDTH 148 - 296 cm | 432 g/m² | REPEAT W 49,0 cm x L 49,5 cm

🏠 ✂️ 📏 🕒 | SHRINKAGE: WARP -5% WEFT -3% | 30.000 cycles | 🧺 🧼 🧴

↔️ | SELVEDGE | RAIL ROADED 📦 UPON REQUEST

THIS ARTICLE IN SINGLE WIDTH HAS ONE ONLY SELVEDGE - DIGITAL PRINTING ON 100% NATURAL FIBERS MAY PRESENT COLOUR IRREGULARITIES





| BOGO

Bogo, which means 'clay', becomes the main element used in the ancient Bogolan technique of printing fabrics. The simplicity of the motifs is enriched by its rhythmic layout and resizing. Like small incisions, the forms of Bogo catch our eyes and invite us to include these shapes in any space.



100% COTTON | WIDTH 148 - 296 cm | 432 g/m² | REPEAT W 36,5 cm x L 36,5 cm

🏠 ✂️ 🧺 📐 © | SHRINKAGE: WARP -5% WEFT -3% | 30.000 cycles | 🧺 🧺 🧺

↔️ | SELVEDGE | RAIL ROADED 📄 UPON REQUEST

THIS ARTICLE IN SINGLE WIDTH HAS ONE ONLY SELVEDGE - DIGITAL PRINTING ON 100% NATURAL FIBERS MAY PRESENT COLOUR IRREGULARITIES

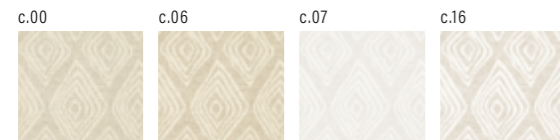




| JALA

BOGOLAN LINES

Bravery is symbolised by the Bambaras in the form of successive diamonds. The irregularity of the lines and sizes is created by not applying colour to the area with the motifs, recalling the way of artisan manufacture of Bogolan fabrics.



100% COTTON | WIDTH 148 - 296 cm | 432 g/m² | REPEAT W 8,5 cm x L 15,0 cm

🏠 ✂️ 🧺 🔄 | SHRINKAGE: WARP -5% WEFT -3% | 30.000 cycles | 🧺 🧺 🧺

🔗 | SELVEDGE | RAIL ROADED 📦 UPON REQUEST

THIS ARTICLE IN SINGLE WIDTH HAS ONE ONLY SELVEDGE - DIGITAL PRINTING ON 100% NATURAL FIBERS MAY PRESENT COLOUR IRREGULARITIES






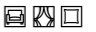
| MERE

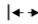
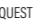
TRIBAL SYMBOLOGY

In a different way, Bogolan symbology gives us Mere, a pattern with diamonds that refers to motherhood. This print runs through the fabric with its grey and sandy tones, creating a rhythmic and slightly-faded effect. Geometry and the contrast of hues are particularly important in this fabric and its attractive ethnic touch.



100% COTTON | WIDTH 148 - 296 cm | 432 g/m² | REPEAT W 36,5 cm x L 41,0 cm

 | SHRINKAGE: WARP -5% WEFT -3% | 30.000 cycles | 

 | SELVEDGE |  RAIL ROADED  UPON REQUEST

THIS ARTICLE IN SINGLE WIDTH HAS ONE ONLY SELVEDGE - DIGITAL PRINTING ON 100% NATURAL FIBERS MAY PRESENT COLOUR IRREGULARITIES



| SAJENI

GEOMETRY POINTS THE PATH

Bambara women have used their Bogolan fabrics to pass down advice and messages to their daughters from generation to generation. In its symbology, Sajeni means 'straight path', and it's determined by horizontal lines. It's these vertical and horizontal stripes, slightly snaked, that give shape to our print.



100% COTTON | WIDTH 148 - 296 cm | 432 g/m² | REPEAT W 49,0 cm x L 23,0 cm

🧺 ✂️ 🧼 🔄 | SHRINKAGE: WARP -5% WEFT -3% | 30.000 cycles | 📏 📐 📏

🔗 | SELVEDGE | RAIL ROADED 📦 UPON REQUEST

THIS ARTICLE IN SINGLE WIDTH HAS ONE ONLY SELVEDGE - DIGITAL PRINTING ON 100% NATURAL FIBERS MAY PRESENT COLOUR IRREGULARITIES

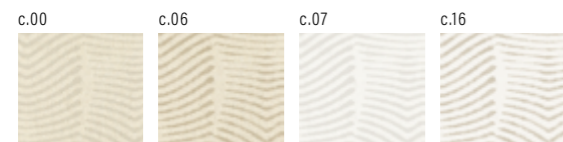




| SAKOLO

DORSAL MOVEMENT

Sakolo is a herringbone pattern that reminds us, in Bogolan symbology, of a 'backbone'. The growth of the patterns, its vertical layout and the thickness of the lines create a slight motion optical illusion that accompanies the serene, tribal character of this print.



100% COTTON | WIDTH 148 - 296 cm | 432 g/m² | REPEAT W 73,5 cm x L 37,0 cm

🧺🧼🧴🧻🧰 | SHRINKAGE: WARP -5% WEFT -3% | 30.000 cycles | 🧺🧼🧴🧻🧰

↔️ | SELVEDGE | RAIL ROADED 🧰 UPON REQUEST

THIS ARTICLE IN SINGLE WIDTH HAS ONE ONLY SELVEDGE - DIGITAL PRINTING ON 100% NATURAL FIBERS MAY PRESENT COLOUR IRREGULARITIES







| AIRE

WINDS BRINGING CHANGES

Our new collection of essential voiles takes its name from the element that surrounds them: the air.

Its movement, the wind, is called in so many different ways as the intensity that causes them or the places where they start, in this case, the Mediterranean.

This mix of free and invisible elements, which we can feel on our skin, inspires us to relate our new fabrics to the environment and to personify in them names of winds that bring changes, that speak to us of freedom, that clean, that bring rain, seeds or sand.

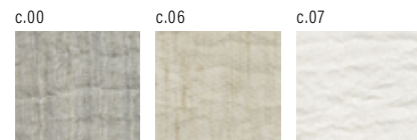
Natural colours. Plain weaves. Light herringbones or stripes immersed in the cloth. Subtle variations in thickness, all in double width, prepared to modulate the air that comes in through our windows.



| BORA

GUSTS OF WIND

A cold, dry wind formed by the currents of the Mediterranean blows in gusts and becomes present in winter, hitting the coasts of the Adriatic. The Bora voile, with its tumultuous appearance, enchants us with the light filtered by its linen and wool threads, intentionally disordered in Jacquard. Available in 3 colours.



52% WOOL - 35% POLYESTER - 13% LINEN | WIDTH 308 cm | 107 g/m²

🧺🧼🧶🌀🌀 | SHRINKAGE: WARP -3% WEFT -2% | 🧺

📏 SELVEDGE | 🚚 RAIL ROADED | 📦 UPON REQUEST

WE RECOMMEND WASHING THE FABRIC BEFORE MAKING UP





| BORA



Sheer BORA 06



| BRUMA

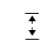

A MIST OF ORGANZA

A wet mist rises from the sea into the air by the effect of the wind. Our Bruma fabric swamps the environment with its two layers, one of transparent organza taffeta and the other of net, protecting the main fabric structure. Both provide a very light and misty look with an attractive drape. Available in 5 colours.



100% POLYESTER | WIDTH 285 cm | 120 g/m²

 | SHRINKAGE: WARP -1% WEFT -2% 

 SELVEDGE | RAIL ROADED  UPON REQUEST

WE RECOMMEND WASHING THE FABRIC BEFORE MAKING UP



Sheer BRUMA 00 - Armchair MONDO 14 - Canvas NICOS 23, 14, 24, 34





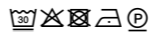

| GARBI



MIDDAY WIND

A wind from the southwest, full of red earth from Africa, arrives at noon and sometimes brings rain to the shores of the Mediterranean. A fusion of irregular, semi-translucent, thick threads uses Garbi to name a discreetly rustic voile. A closed taffeta fabric, of thick warp and weft, available in 4 colours that come from nature.



70% POLYESTER - 30% LINEN | WIDTH 313 cm | 264 g/m²

 | SHRINKAGE: WARP -1% WEFT -1% | 

 SELVEDGE | RAIL ROADED  UPON REQUEST

WE RECOMMEND WASHING THE FABRIC BEFORE MAKING UP



| GREGAL

A STRONG SWELL

Present in the Balearic Islands, on the coasts of Malta, Sicily and the Ionian Sea, Gregal comes sometimes as a storm, producing a strong swell that inspires this 100% linen voile with herringbone weave both irregular and timeless. Formed by a white fancy warp and coloured fancy yarn, it's available in 4 neutral tones.



100% LINEN | WIDTH 300 cm | 87 g/m²

☒☒☒☒☒ | SHRINKAGE: WARP -6% WEFT -4% | ☒

☒ SELVEDGE | RAIL ROADED | ☒ UPON REQUEST

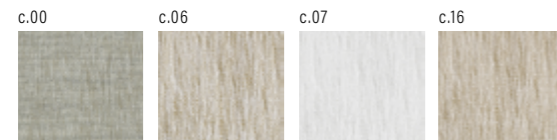




JALOQUE

WINDS THAT BRING CHANGES

With twisted threads, we visualize the Jaloque, also known as Siroco. A tropical wind, dry and warm that crosses the Mediterranean, accompanied by strong storms that announce the change of season in spring and autumn. A fabric with a strong character, heavy and rustic, with a mixture of acrylic and polyester in plain weave, which unites several natural tones in its threads, creating a melange effect that enriches the simplicity of its appearance. Fancy vigore warp and yarn. Available in 4 colours.



90% ACRYLIC - 10% POLYESTER | WIDTH 300 cm | 216 g/m²

🧺🧼🧻🌀🕒 | SHRINKAGE: WARP -2% WEFT -2% | 🧺

|↔| SELVEDGE | RAIL ROADED

WE RECOMMEND WASHING THE FABRIC BEFORE MAKING UP







Sheer MELTEMI 17

| MELTEMI

REFRESH THE ATMOSPHERE

A strong, dry wind which mainly affects the coasts of the eastern Mediterranean. During the long summer days, when it's more common, it's considered a blessing as it cools the environment. A light Jacquard fabric, fancy warp and colourful fantasy weft, our voile exhales threads like small wind gusts that cool down spaces. Available in 3 colours.



59% POLYESTER - 19% COTTON - 13% LINEN - 9% VISCOSA | WIDTH 311 cm | 171 g/m²

🧺 ✂️ 📏 🕒 | SHRINKAGE: WARP -0.4% WEFT -1.4% | 🧼

↔️ | SELVEDGE | RAIL ROADED 🛠️ UPON REQUEST

WE RECOMMEND WASHING THE FABRIC BEFORE MAKING UP

| MISTRAL

A GUSTY WIND

The wind that blows from the Mediterranean coast to the sea appears from one moment to the next as impetuous music. Fearful and unpredictable, it inspires us to make a voile that mixes a more open with a more closed structure to create rustic-looking stripes that run vertically through the fabric in a blend of natural, artificial materials and fantasy patterns that give it many practical qualities of durability. Available in three sandy shades.



62% POLYESTER - 27% ACRYLIC - 8% LINEN - 3% VISCOSE | WIDTH 300 cm | 130 g/m²

🧺🧼🧴🧶🌀 | SHRINKAGE: WARP -1% WEFT +1% | 🧺

📏 SELVEDGE | 🚚 RAIL ROADED | 📦 UPON REQUEST

WE RECOMMEND WASHING THE FABRIC BEFORE MAKING UP



| MISTRAL





| MISTRAL





| PONIENTE

AN EXPECTED WIND

The wind originated from the West, the place where the sun sets. Its expected influence reduces Mediterranean temperatures and adds moisture to crops. We compare its benefits with this 100% linen voile, heir to the purest tradition. A light tarlatan with white fancy linen warp and coloured linen fancy yarn, providing a unique body and transparency. Made in plain weave using a plain loom, available in 4 colours.



100% LINEN | WIDTH 308 cm | 90 g/m²

☒☒☒☒Ⓜ | SHRINKAGE: WARP -8% WEFT -2% | ☒

⚡ SELVAGE | RAIL ROADED | Ⓜ UPON REQUEST

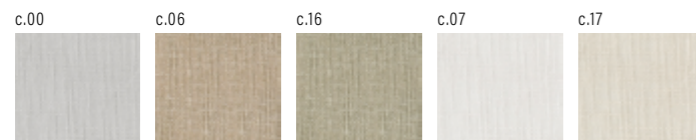




| SURADA

A TROPICAL BREEZE

A southern gust of wind raises temperatures like a gentle tropical caress that embraces the shores of the Mediterranean. Surada, the firmest voile in this collection, shelters us with its rustic fabric, handmade look and silky touch. This open taffeta fabric of thick warp and weft is accompanied by fine threads, preventing it from opening. Available in 5 natural colours, its composition also makes it easy to care for.



69% POLYESTER - 31% LINEN | WIDTH 294 cm | 146 g/m²

🧺🧼🧴🧦🧦 | SHRINKAGE: WARP -1% WEFT -2% | 🧺

📏 SELVEDGE | 🚚 RAIL ROADED | 📦 UPON REQUEST

WE RECOMMEND WASHING THE FABRIC BEFORE MAKING UP





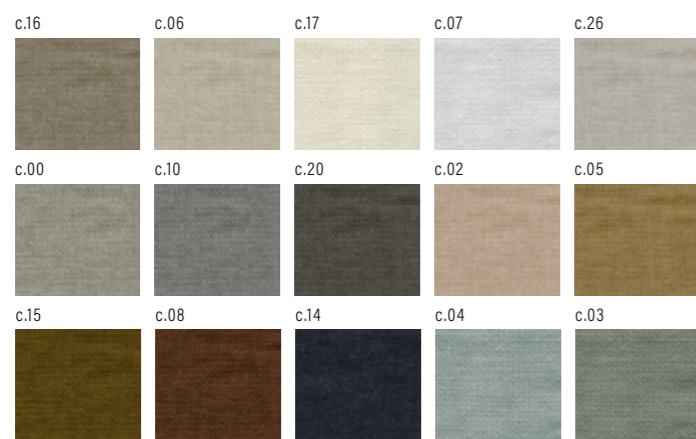
| SURADA



| MONDO

LINEN WITH A STRONG CHARACTER

Mondo is a thick 100% linen fabric, with washed look, perfect for upholstery or curtains. It's high density - 630 g - provides a beautiful and strong drape in contrast with its soft feel. Made in very thick plain weave using a plain loom. Its fancy wrap and yarn, of similar thickness, give the fabric its rustic appearance, accentuated by its stonewashed and aero finishes, adding simplicity and freshness and making it a tremendously versatile fabric. Available in 15 colours.



100% LINEN | WIDTH 147 cm - 294 cm | 610 g/m²

☒☒☒☒☒ | SHRINKAGE: WARP -12% WEFT -4% | 20.000 cycles | ☒☒☒☒☒

☒ UPON REQUEST

WE RECOMMEND WASHING THE FABRIC BEFORE MAKING UP



Sofa MONDO 06









| NICOS

LIGHT AND VERSATILE LINEN

This year we re-release Nicos, a light 100% French linen with an attractive, subtly-textured, rough-looking consistency, and increase its colour palette to 25 shades.

This linen is soft and sheer, with an aero finish. Made in plain weave using a plain loom, with fancy warp and yarn of similar thickness. Fresh and light, Nicos is perfect for voiles, curtains, bedding and decor.



100% LINEN | WIDTH 280 cm | 180 g/m²

🧺🧼🧴🧶🧰 | LIGHTFASTNESS: 6 | 🧺🧼

📏 SELVEDGE | RAIL ROADED 📏 UPON REQUEST

WE RECOMMEND WASHING THE FABRIC BEFORE MAKING UP



Duvet cover

Bedcover NICOS 16 - Plaid NICOS 36 - Cushions NICOS 36, 16





Tablecloth NICOS 34 - Table mats NICOS 34



| NICOS

Curtain NICOS 24 - Bedcover NICOS 14 - Plaid NICOS 24 - Cushions NICOS 34, 14, 24







Curtain NICOS 25 - Puf tapizado MONDO 15 - Cushions MONDO 05, 08, 15, NICOS 15, 25, 35



| NICOS









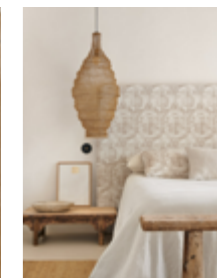
01



02



04



05



06



08



09



10



11



12



13



14



15



16



17



18



19



20



21



22



23



24



BAMBARA 06



MERE 06



SAKOLO 06



SAJENI 06



JALA 06



BOGO 06



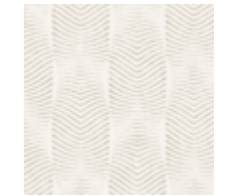
BAMBARA 16



MERE 16



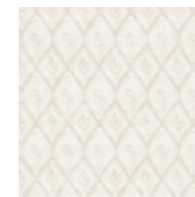
MERE 26



SAKOLO 16



SAJENI 16



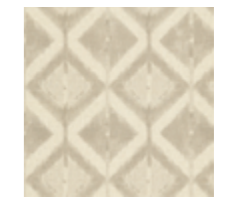
JALA 16



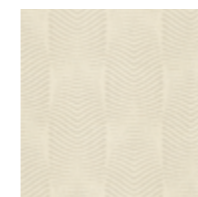
BOGO 16



BAMBARA 00



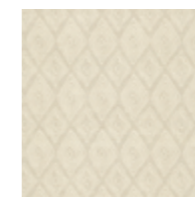
MERE 00



SAKOLO 00



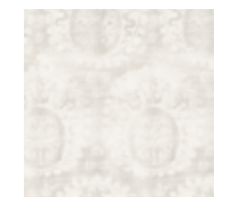
SAJENI 00



JALA 00



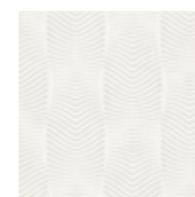
BOGO 00



BAMBARA 07



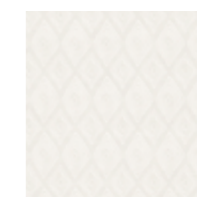
MERE 07



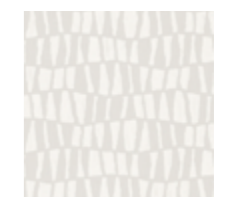
SAKOLO 07



SAJENI 07



JALA 07



BOGO 07

| AIRE GALLERY



01



02



03



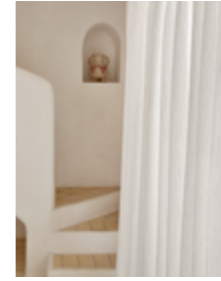
04



05



06



07



08



09



10



11



12



13



14



15



16



17



18



19



20



21



22



23



24

| AIRE FABRICS



JALOQUE 06



JALOQUE 16



JALOQUE 07



JALOQUE 00



GREGAL 07



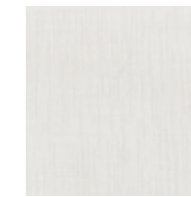
GREGAL 17



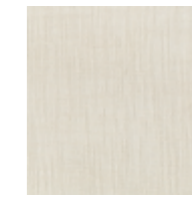
GREGAL 06



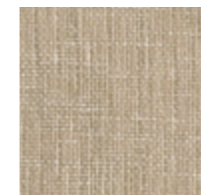
GREGAL 00



SURADA 07



SURADA 17



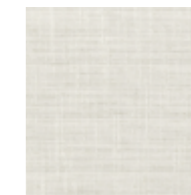
SURADA 06



SURADA 16



SURADA 00



MELTEMI 17



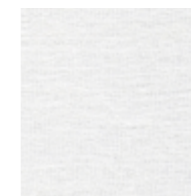
MELTEMI 06



MELTEMI 00



BRUMA 07



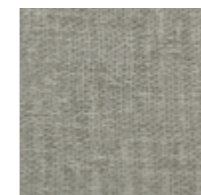
BRUMA 17



BRUMA 06



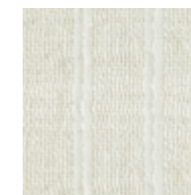
BRUMA 00



BRUMA 03



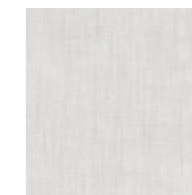
MISTRAL 07



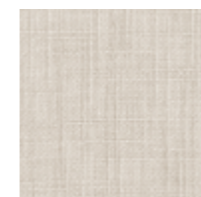
MISTRAL 17



MISTRAL 06



GARBI 07



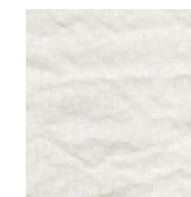
GARBI 17



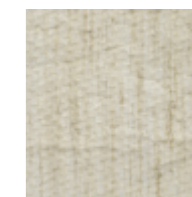
GARBI 06



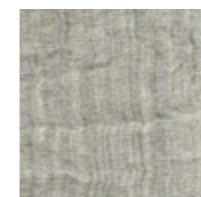
GARBI 00



BORA 07



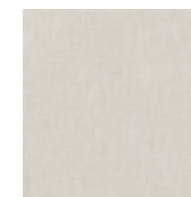
BORA 06



BORA 00



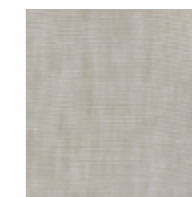
PONENTE 07



PONENTE 17



PONENTE 06



PONENTE 00

| SWATCH BOOK SAHEL Y AIRE

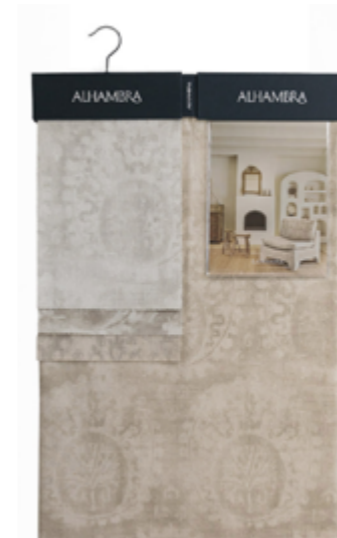


191482 SWATCH BOOK SAHEL

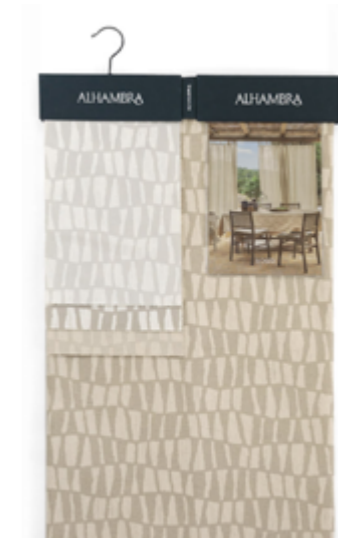


191458 SWATCH BOOK AIRE

| HANGERS SAHEL



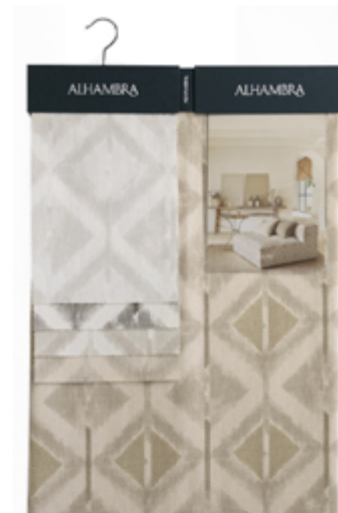
191483 HANGER BAMBARA



191488 HANGER BOGO



191487 HANGER JALA



191486 HANGER MERE

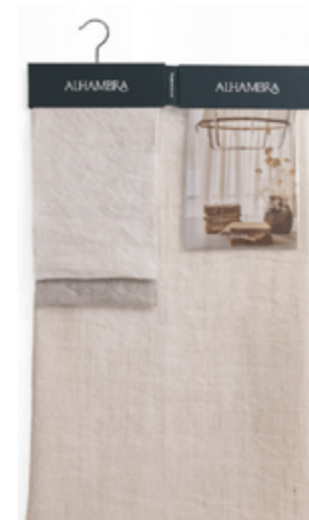


191484 HANGER SAJENI

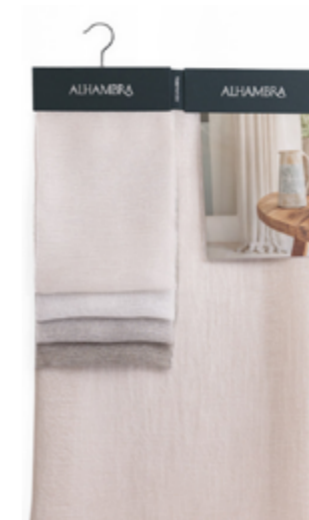


191485 HANGER SAKOLO

| HANGERS AIRE



191459 HANGER BORA



157576 HANGER BRUMA



191465 HANGER GARBI



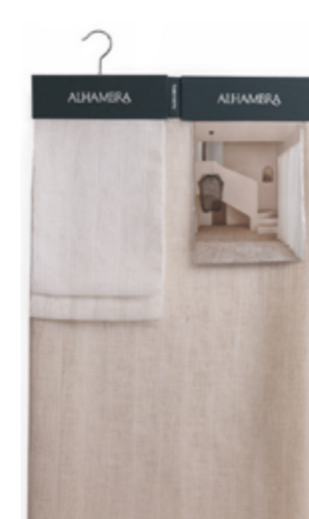
191461 HANGER GREGAL



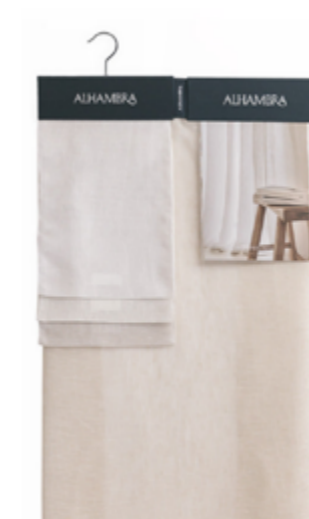
191462 HANGER JALOQUE



191460 HANGER MELTEMI



191466 HANGER MISTRAL



191463 HANGER PONIENTE



191464 HANGER SURADA

| MONDO FABRICS

| NICOS FABRICS



MONDO 16



MONDO 06



MONDO 17



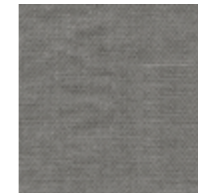
MONDO 07



MONDO 26



MONDO 00



MONDO 10



MONDO 20



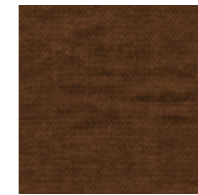
MONDO 02



MONDO 05



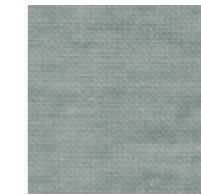
MONDO 15



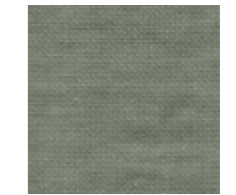
MONDO 08



MONDO 14



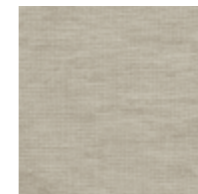
MONDO 04



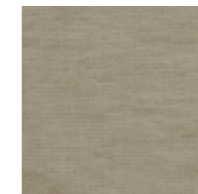
MONDO 03



NICOS 08



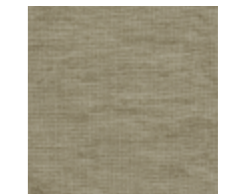
NICOS 26



NICOS 01



NICOS 66



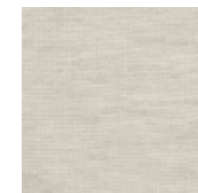
NICOS 36



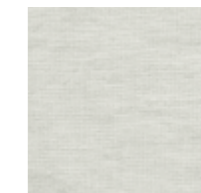
NICOS 16



NICOS 46



NICOS 06



NICOS 07



NICOS 17



NICOS 10



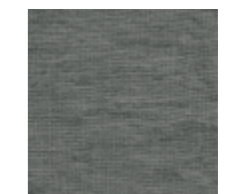
NICOS 13



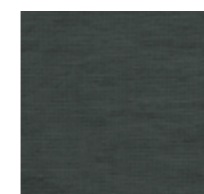
NICOS 20



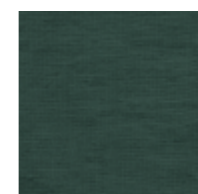
NICOS 30



NICOS 40



NICOS 44



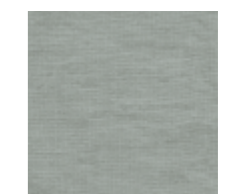
NICOS 23



NICOS 34



NICOS 24



NICOS 14



NICOS 12



NICOS 22



NICOS 32



NICOS 15



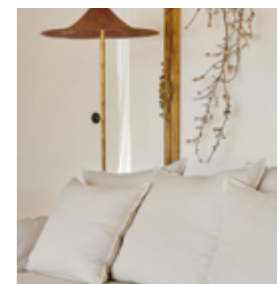
NICOS 25



01



02



03



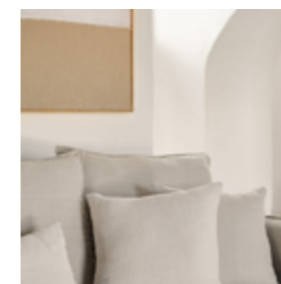
04



05



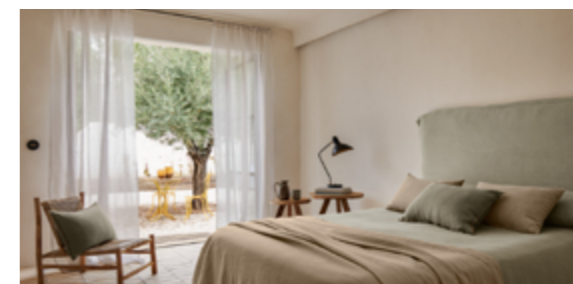
06



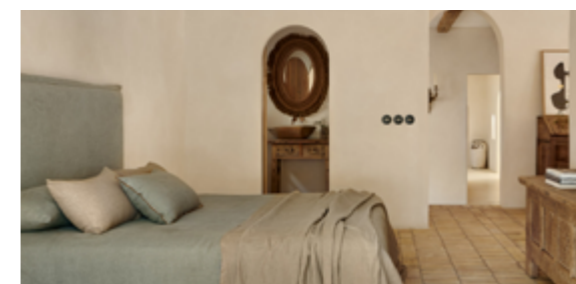
07



10



09



08



11



12



01



02



03



04



05



06



07



08



09



10



11



12



13



14



15



16



18



19



21



22



23



24

| MONDO



191479 SWATCH BOOK MONDO



191698 MINI STACK MONDO



191480 HANGER MONDO



191476 SWATCH BOOK NICOS



191697 MINI STACK NICOS



191477 HANGER NICOS

| SAHEL

| AIRE

| MONDO

| NICOS

FOR MORE INFORMATION, PLEASE CONTACT:
www.alhambrafabrics.com

HEAD OFFICE:
C/ del Marco, 61 - 03114 Alicante
Phone:(+34) 965 107 004

SALES NATIONAL:
Phone: (+34) 965 107 418
sales@alhambrafabrics.com

EXPORT:
Phone:(+34) 965 107 420
sales@alhambrafabrics.com

MARKETING:
Phone:(+34) 965 107 409
marketing@alhambrafabrics.com

INSTAGRAM | FACEBOOK | PINTEREST | B2B





ALHAMBRA

www.alhambrafabrics.com